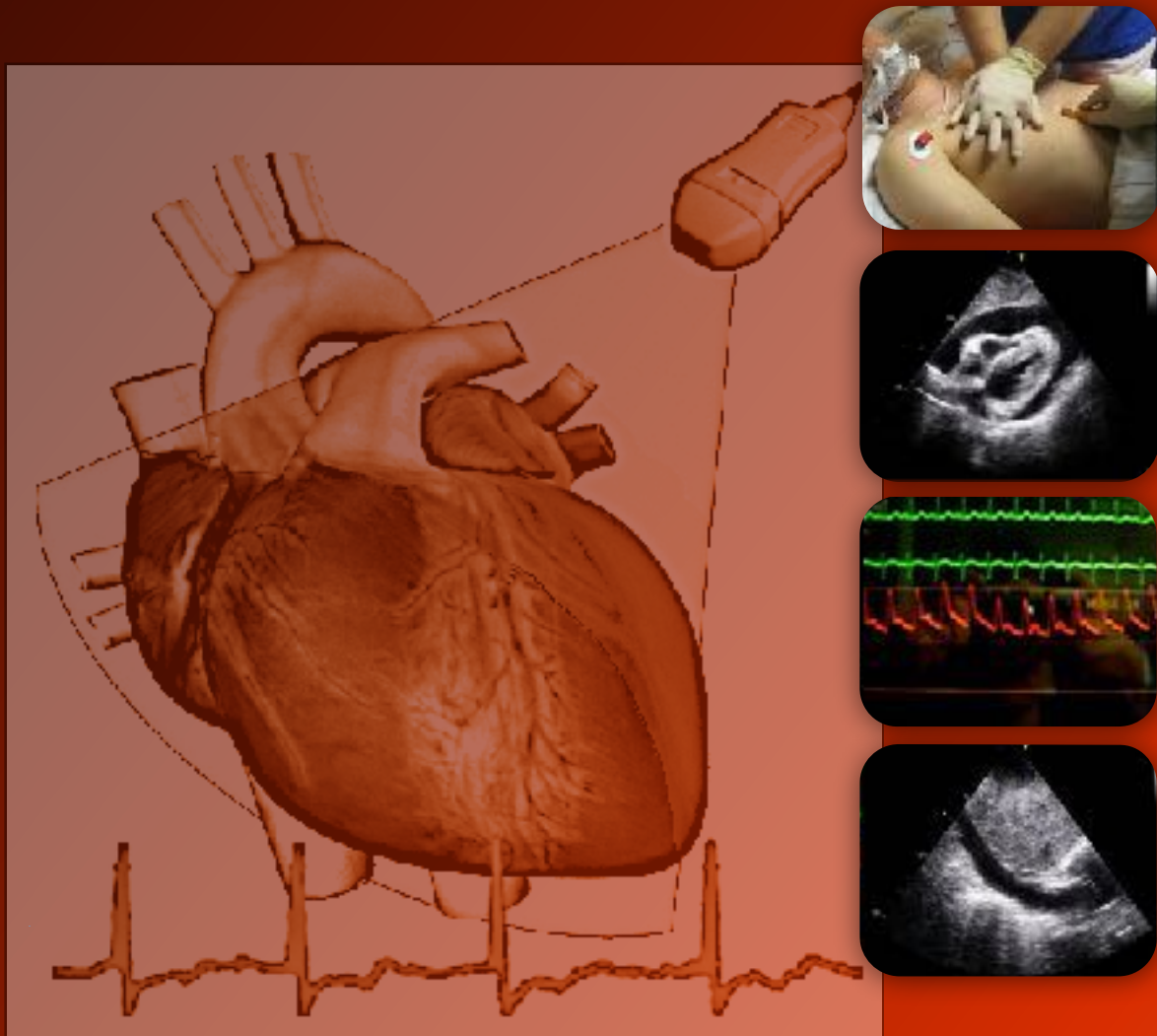


WINFOCUS' FOCUSED CARDIAC ULTRASOUND (WBE)



Based on the “*International Evidence Based Recommendations for Focused Cardiac UltraSound*“ published on JASE 2014”

**An International Course for Emergency, Intensive and Critical Care physicians
designed and organized by WINFOCUS (www.winfocus.org)**



prepares to WBE
International
Certification

A course on Focused Cardiac Ultrasound (FoCUS) specifically designed for Intensive, Critical Care and Emergency Physicians. The course is targeted at physicians who are new to cardiac ultrasound, and covers the use of limited Transthoracic Echocardiography (**TTE**) in the setting of cardiac arrest/peri-resuscitation, and as a screening tool for the unstable patient in the ICU/emergency. It might also be of interest to more Echocardiography-experienced clinicians wishing to make their assessment of the critical patient more effective. The course (formerly known as Winfocus Basic Echo, WBE) after having reached its 60th edition since 2008, being delivered in more than 25 countries worldwide, is now presented in its updated, brand new format. Its content is conform to the proceedings of the 1st International Conference on Focused Cardiac UltraSound (Via *G. International Evidence-Based Recommendations for Focused Cardiac Ultrasound - J AM SOC ECHOCARDIOGRAPHY 2014; 27: 683.e1-683.e33*). It's pre-requisite for WINFOCUS WBE international certification.

The faculty gathers reknown experts in the use of and training in point-of-care ultasound, and provides participants with a remarkable amount of practical teaching, simulation and interactive cases.

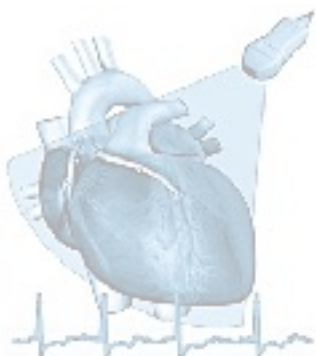
Director

Vicki Noble (USA)
Gordon Lee (Hong Kong)

Faculty

Toh Hong Chuen (Singapore)
Tang Ho Ming (Hong Kong)
Mok Ka Leung (Hong Kong)
Lee Ka Hing Herman (Hong Kong)
Yuen Chi Kit (Hong Kong)
Cheung Koon Ho Ralph (Hong Kong)
Chan Hok Hang (Hong Kong)
Dora Lee (Hong Kong)
Polly Tsai (Hong Kong)
Wallace Ngai (Hong Kong)

Endorsed by:



www.winfocus.org



WINFOCUS' FOCUSED CARDIAC ULTRASOUND (WBE)



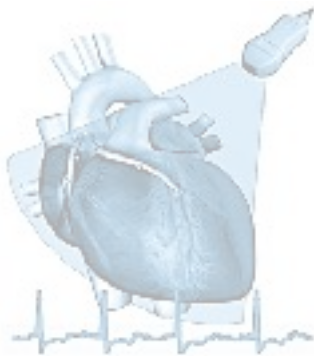
FEB 8TH

FoCUS PRINCIPLES & FoCUS EXAM

- 8.30 *Registration*
- 8.35 **Welcome, course instructions**
- 8.40 **Focused Cardiac Ultrasound in Critical Care: aims and place in echocardiography training**
- 9.00 **FoCUS Views and Targets of the exam**
- 9.25 **FoCUS signs of Chronic cardiac disease**
- 9.45 **FoCUS signs of LV systolic dysfunction**
- 10.05 *Coffee*
- 10.25 **FoCUS signs of RV systolic dysfunction**
- 10.45 **FoCUS signs of severe hypovolemia**
- 11.05 **FoCUS signs of pericardial effusion and tamponade**
- 11.25 **FoCUS signs of obvious valvular pathology**
- 11.45 *Lunch*
- 12.45 **HANDS ON TRAINING (HOT 1): Basic TTE views, Laptop training**
6 WORKSTATIONS with healthy models, tutorial laptops
(All faculty)
- 14.45 *Break*
- 15.00 **HANDS ON TRAINING (HOT 2): TTE views wrap up, ALS Megacode, Laptop training, Shock Megacode**
6 WORKSTATIONS with healthy models, tutorial laptops, Cardiac simulator
(All faculty)
- 17.00 *End of first day*

***FEB 9th* FoCUS IMPLEMENTATION INTO CLINICAL SCENARIOS**

- 8.30 **Basic cardiac ultrasound knobology**
- 8.55 **Focused Cardiac Ultrasound in cardiac arrest**
- 9.15 **Focused Cardiac Ultrasound in shock**
- 9.40 **Focused Cardiac Ultrasound in respiratory failure**
- 10.00 *Coffee*
- 10.20 **Pitfalls and limitations of Focused Cardiac Ultrasound**
- 10.40 **Lung ultrasound in cardiac arrest & shock:
pneumothorax, “wet lung”**
- 11.15 **Additional: FoCUS role in acute aortic syndromes**
- 11.30 **Additional: FoCUS integration in the whole body ultrasound approach to shock
and respiratory failure**
- 12.00 *Lunch*
- 13.00 **INTERACTIVE CASE SESSION**
- 14.30 **HANDS ON TRAINING (HOT 3): Lung Ultrasound, Wrap up of TTE views, Shock
Megacode**
6 WORKSTATIONS with healthy models, tutorial laptops, Cardiac simulator
(All faculty)
- 16.30 *Final Test*
- 16.50 *End of Course & Certificate distribution*



Online application: <http://www.hkcem.com/courses/usg/>

Enquiries: enquiry@hkcem.org.hk

Tel: 28718877